



# 350S

Commercial Sectional Doors  
2" Insulated Sections

# 350S

White Ribbed Panel

---



# 350S

Formally marketed as 308

## VALUE



Door: 10 yr



Hardware: 1 yr



Springs: 1 yr

- **R-10.4** Thermal Rating
- Steel Construction
- 2" Section Thickness
- White (Field Paint Option)
- 3 Window Designs

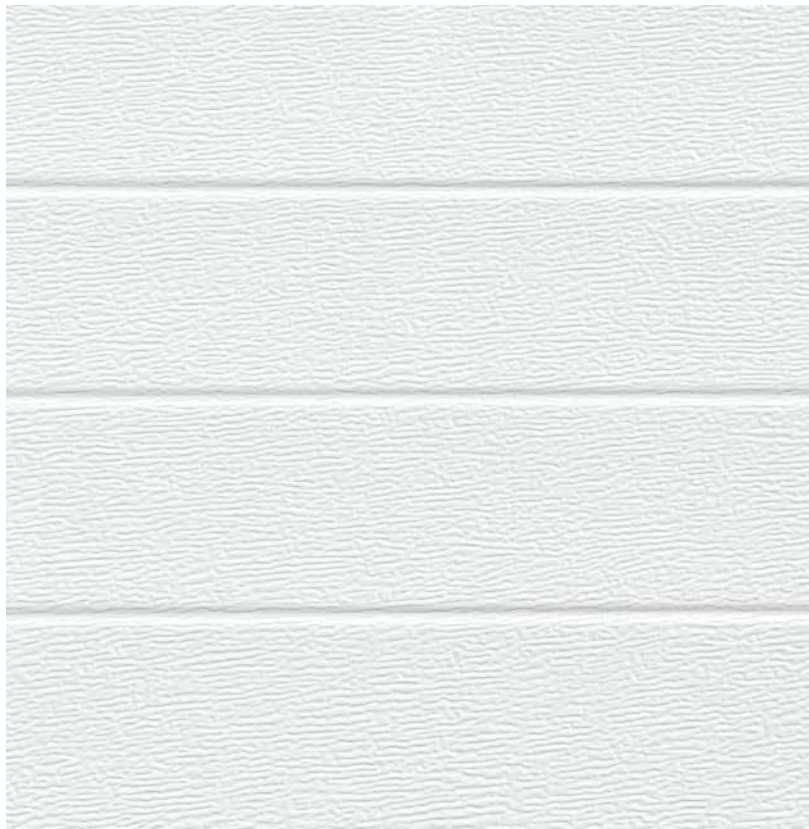
Thermal Rating



Durability



Low Maintenance



## Section Detail

**SECTION DETAIL** 350S panels are produced in a woodgrain texture exterior face and stucco interior surface. The door panels are prepared inside and out to offer maximum protection to provide you with a long-lasting surface finish and reduced maintenance cost.

**Left Facing Page Image:**

White ribbed panel

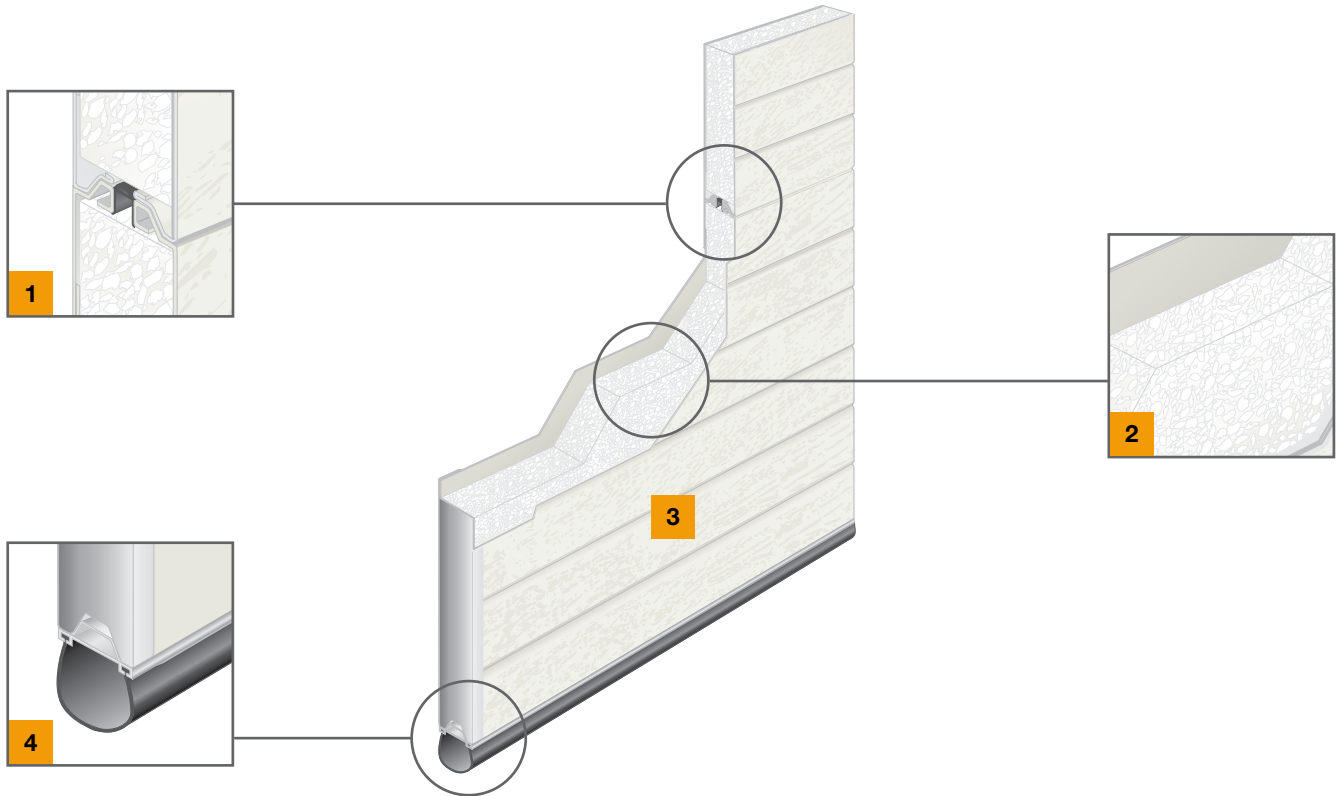
**Bottom Left Image:**

Close-up of a ribbed panel with woodgrain texture

# 350S

## Panel Features

# The Industry Leader in Innovative Door Strength and Energy Efficiency



### Tongue & Groove Section Joints **1**

Precisely designed section joint with thermal barrier joint seal reduce air infiltration and create weather tight seal.

### Sandwich Construction **2**

3-layer steel front and back construction with insulating polystyrene core increases energy savings.

### Panel surface treatment **3**

Galvanized finished painted steel provides superior corrosion resistance for years of trouble-free performance.

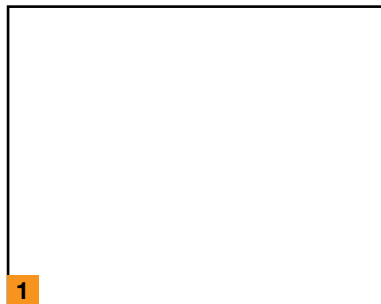
### Bottom Weather Seal **4**

Keeps out wind, rain, debris and other elements for added energy savings.

# Panel Design



1 Ribbed



# Color Option

1 White

# Window Design Options



1 ASA 24" X 6"

2 ASA 24" X 12"

3 Clear anodized full-view aluminum section

Door Width	Maximum No. of Windows
Up to 9' 2"	2
9' 3" to 12' 2"	3
12' 3" to 16' 2"	4
16' 3" to 19' 2"	5
19' 3" to 20' 2"	6

# HÖRMANN NORTH AMERICA



Sparta, TN - North American Headquarters / Sectional Doors

## FIVE PRODUCTION PLANTS, ONE FAMILY



Puyallup, WA - Sectional Doors



Montgomery, IL - Sectional Doors



Barrie, ON (CAN) - High Performance Doors



Burgettstown, PA - High Performance Doors

As one of the world's leading manufacturers of doors we're committed to providing the best quality, value, and selection. Whether residential, commercial or industrial, we have the door you're looking for. Each Hörmann product gives you the perfect array of benefits and options to satisfy your customers.

### Call toll free

Eastern & Central US: 877.654.6762

Western US: 800.522.2264

Canada: 833.743.2443

### Contact

Email: [info@hormann.us](mailto:info@hormann.us)

Website: [hormann.us](http://hormann.us)

### Follow us on social media



### AVAILABLE FROM:

